

AJ 6434

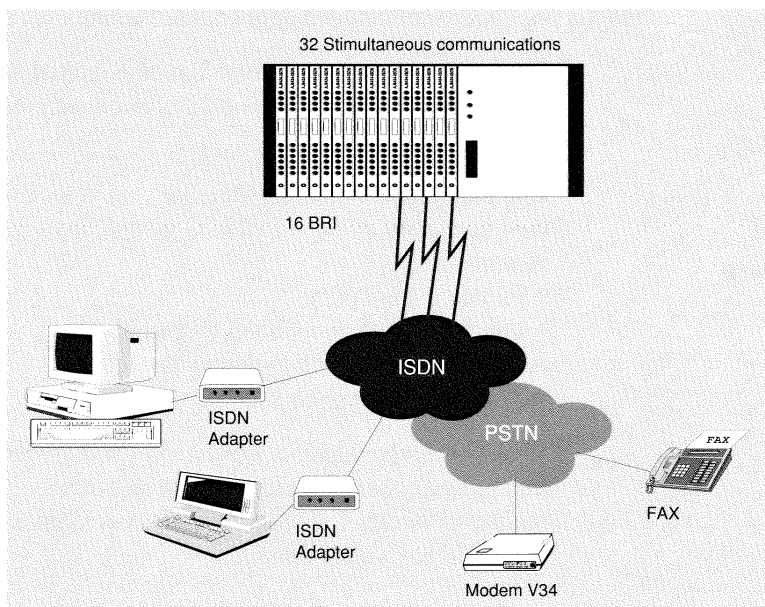
MAIN ADVANTAGES

- Supports one or two BRI's
- 2B-Channel bonding (128 Kbps)
- High speed V34 Model/ Fax
- Double DTE access
- Random network access
- Transparent PSTN to ISDN migration
- Interface management (optional)
- Supports hot swapping

CXR proposes a solution from PSTN to ISDN migration for the central site and server market. The AJ6434 rack card range is compatible with the CXR AMS access platform.



MULTI NETWORK SERVER CONNECTIVITY



INTEGRATED MODEM IN CHANNEL B

The AJ6434 card offers the features of an analogue modem: fax, V34 modem for file transfer plus FAX ROUTING capabilities using the integrated extended message feature coupled to the ISDN MSN option. From the ISDN you can continue communication with the world of PSTN. AJ6434 automatically determines the network access-PSTN (modem) or ISDN.

ISDN TERMINAL ADAPTER

The AJ6434 offers the following features for each interface :

- V120—64 Kbps : asynchronous rate adaptation of up to 115.2 Kbps.
- V120—128 Kbps : asynchronous rate adaptation mode up to 230.4 Kbps (2B channel bonding).

NETWORK INTERFACE

Connected to one or two BRI's, the AJ6434 card can simultaneously access two or four B channels via the two V24 DTE interface.

USER INTERFACE

The two V24 asynchronous interfaces are compatible with the Hayes AT commands. They support autobauding up to 115.2 Kbps with maximum interface speed of 230.4 Kbps.



ISDN/V34/FAX MODEM SOLUTION WITH DOUBLE DTE & BRI ACCESS

TECHNICAL SPECIFICATIONS

CONFIGURATION

Supports DTE AT commands as well as commands from the controller card module SMTR CFIP.

- By using Hayes AT commands.
- By the controller card commands.

The configuration is saved in the internal memory.

RANDOM NETWORK ACCESS

The AJ6434 supports both TA and Modem/fax features in the B channel.

Network access from the PSTN or ISDN is automatic, ensuring transparent migration from the PSTN to the ISDN.

GLOBAL CONNECTIVITY

AT command set compatibility guarantees immediate interoperability with previous software. The integrated flash Eprom ensures the download of different network codes and also permits future upgrades.

The AJ6434 cards are fully compatible with CXR's modular rack as are the complete range of CXR modems and Terminal Adapters.

The CXR solution permits the gradual planning for central site and server network access.

The integrated systems manager, an option in the controller card, offers the following features :

- Platform inventory,
- Interface configuration & display,
- Real Time alarms & Acknowledgements,
- Statistics & diagnosis.

These features support both local and remote access via the integrated modem in the controller card. Optional SNMP manager for OPENVIEW is available.

ITU-T STANDARDS

- Data IUT-T V34, V32bis, V32, V22bis, V22, V23, V21, IUT-T V120, V110, V14 57600, PPP,
- Fax IUT-T V17, V29, V27ter,
- RNIS VN3, VN4, Euro ISDN, NET 3.

DTE INTERFACE

- V24-RJ45 EIA 561.
- Data async. Modem 115.200 bps, ISDN 230.400 bps,
- Fax 9600 bps.

TRANSMISSION MODES

- Asynchronous, fax, modem,
- V14—57600 bps,
- V120—64 Kbps,
- V120—128 Kbps (2B channels bonding),
- V110—38400 bps,
- Conversion async/sync (PPP).

FLOW CONTROL

- RTS/CTS, XON/XOFF.

COMMAND SET

- Compatible Hayes AT Commands.

DATA COMPRESSION

- IUT-T V42bis, MNP5.

ERROR CORRECTION

- IUT-T V42, MNP4.

MISCELLANEOUS

- Size : 160 x 290 mm,
- Weight : 0,25 Kg.

CONFORMS TO THE FOLLOWING SPECIFICATION

Safety
EN 60950:1992,
EN 41003:1993.

CEM
EN 55022:1987— Class B
EN 50082-1:1992.

Network—ISDN Access
EURO ISDN NET-3, I-CTR3
ETS 300153: September 1992.
ETS 300104: July 1991

CE label on this equipment shows that it conforms with instruction 99/5/CE-Apris 07-1999.

FUNCTIONS	VERSIONS		
	FMRE	FTRE	FTAE
V14—57600	X	X	X
Conversion async/sync (PPP)	X	X	X
V120—1B	X	X	X
V120—2B	X	X	X
Fax GIII Class 2	X	X	X
Modem V34 async.	X	X	X
2 Ports DTE async.	X	X	X
Strap selectable BRI access	1 or 2	1or 2	1 or 2
Flash Eprom	X	X	X
Hot Swappable	X	X	
Stand Alone	X		X
Rackmout	X	X	
Management SMTR CFIP	X		

Information on this data-sheet is subject to change without notice and should not be construed as a commitment by CXR.

Distributed by:



Rue de l'Ornette
28410 Abondant

Tél. : 332.37.62.87.90
Fax : 332.37.62.88.01
Email: trans@cxr.fr