

CV200-TTX

Characteristics & Benefits

- G704 Unit : E1 2.048 MBPS and T1 1.544 MBPS
- Network interface : balanced 100/120 Ohm RJ45 and unbalanced 75 Ohm BNC
- Ethernet interface : 10 / 100 BaseT, automatic rate
- E1 : G703, G704 à 2,048 MBPS +/- 50 ppm
- T1 : G704, DSX-1 and CSU Line Build Out, D4 and ESF framing
- Based on up to date technologies for clock recovery, jitter, bandwidth allocation
- Flexible timeslot allocation
- Rate : Nx64 or Nx56 KBPS
- E1 or T1 network mode selectable by the user
- Can be used as a short or long range modem (1.6 km)
- Filtering Ethernet bridge
- 100,000 address memory
- 400 frame buffer
- Data compression algorithm
- Easy to manage : VT100 menus, Windows graphical software
- Local and remote Network management : Telnet, FTP, SNMP, TRAP
- Compact metallic enclosure, choice of mains power supply and DC/DC converter 48 Vdc or 12-36 Vdc
- DIN rail kit
- 19" kit for two units / 1U

ETHERNET BRIDGE AND E1/T1 G704 CONVERTER

The **CV-200** is a manageable 10 / 100 Base TX Ethernet bridge that connects to a G704 network termination in E1 – 2,048 MBPS or T1 – 1,544 MBPS.

The **CV-200** is a must component of E1/T1 network to interconnect Ethernet Local Area Network.

The **CV-200** fits in a compact metallic enclosure with a choice of 230 Vac or 110 Vac mains power supply, or 48 Vdc or 12-36 Vdc DC/DC converter to satisfy most industrial and Telco's requirements.

The **CV-200** embeds a T1 and E1 network interface. It can easily be deployed in international application and be set by the user for European E1 or USA T1 network access.

The **CV-200** includes a powerful Ethernet bridge. It will suit most network interconnection needs thanks to its Ethernet frame filtering, compression algorithm, VLAN and other protocol transparency features.

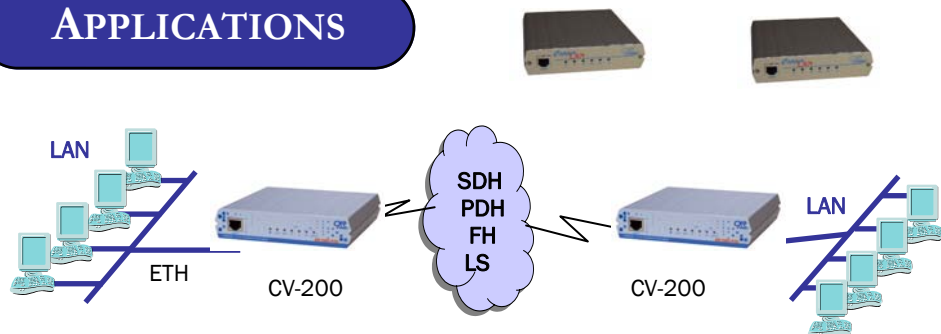


The **CV-200** is very easy to operate, especially thanks to its Windows graphical software offered with the equipment. The **CV-200** can also be managed from the local area network with the IP protocols : Telnet, SNMP, FTP.

The **CV-200** installation is very flexible. It can be mounted on a DIN rail with an optional kit. Two units may also be installed in a 19 inch bay.

The **MX-200-TTX** is also part of this range of products. It is a Drop and Insert multiplexer with an Ethernet interface and an RS232 port to connect an asynchronous equipment.

APPLICATIONS

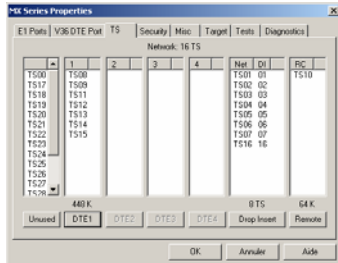


The **CV-200** is an efficient and cost effective Ethernet bridge to connect two enterprise LAN's over an E1 or T1 network such as a PDH loop, or a microwave link, or other network with E1/T1 interface, or in a point to point schema. The CV-200 provides all features and rate conversion capability of a complete CSU-DSU, with a E1 and T1 network interface, and both Nx64 and Nx56 K conversion.

The Ethernet bridge provides a lot of advantages such as high performance, protocol transparency, ease of installation and configuration, data compression.

Ethernet Bridge over E1/T1 – G-704 Interface

G703/G704 rate manager



MXCFG : Windows graphical software to manage the CV and MX range of products



Rue de l'Ornette
28410 Abondant
France

Phone : 02.37.62.87.90
Fax : 02.37.62.88.01
Email: trans@cxr.fr

SPECIFICATIONS

E1 Interface

- Transparent (G703) or framed mode (G704)
- G704 framing : PCM31, PCM31C, PCM30, PCM30C.
- Impedance 120 Ohms, RJ45 socket
- Impedance 75 on BNC sockets for the network interface
- Phase jitter performance : G823
- Line code : HDB3
- Rate : 2048 Kbps +/- 50 ppm
- Long Haul / Short Haul : -16 / -40 dBm
- Transmit clock : internal, network, external from the D&I E1 terminal
- Insulation : 1500V as per K20 et K21 standards

T1 Interface

- Line code : AMI, B8ZS
- Line Build Out : DSX-1 and CSU
- Framing : D4, ESF
- RJ45 socket
- G704 : 1 to 24 IT
- Timeslot rate : Nx64 or Nx56 KBPS
- Phase jitter performance : G823
- Rate: 1,544 Kbps +/- 50 ppm
- Transmit clock : internal, network, external from the D&I T1 terminal
- Impedance : 100 Ohms on a RJ45 socket
- Insulation : 1500V as per K20 et K21 standards

Ethernet Interface

- Rate : 10 / 100 MBPS
- Interface : 10/100 BaseT, IEEE 802.3
- Socket : RJ45
- Ethernet bridge with automatic MAC address learning : 10,000 MAC address memory
- 400 Ethernet frame buffer
- Filtering of Ethernet frame can be enabled / disabled
- Padding bit suppression : enable / disable
- Data compression algorithm for rates up to 256 KBPS
- Statistics : sent and received frame counters, filtering diagnostics

Time slot Allocation

- Timeslot extraction from the network interface to the Ethernet port
- User defined allocation, no restriction
- Nx56KBPS or Nx64KBPS

Configuration Port

- RS232, V24/V28, RJ45 socket, 8 bits, 19.2 Kbps
- VT 100 menus, AT commands

LED Indicators

- Power / management in progress
- Test
- Link : LAN is connected
- LAN RX : data received from the LAN
- LAN TX : data sent to the LAN
- WAN CD : signal received on the WAN E1/T1 port
- WAN SYNC : E1/T1 network is synchronized

Management

- Local management through the console port : AT commands, VT 100 menus
- Windows graphical software MX-CFG : edit and save configuration on the PC, supervision, test control, firmware upgrade
- Diagnostics : network test loop, PING
- TCP-IP management : Telnet, SNMP, FTP for configuration and firmware file transfer
- Remote control through TCP-IP protocols
- Statistics over 24 hours : counters for Loss Of Synchronization, loss of carrier, Errored Seconds, Severely Errored Seconds, UnAvailable Seconds

Power supply

- External 230 Vac : CV-200-TTX-MVE
- External 110 Vac : CV-200-TTX-MVU
- Internal 48 Vdc : CV-200-TTX-MC

Environment

- Size : 146.5 x 144 x 30.7mm
- Weight : 0.5 kg - Mains power supply: 0.1 kg
- Operating temperature : 0-45 °C (32-122 °F)

CV-200 has been design to comply with the following standards :

- EEC : EN-60950, EN-50081-1, EN-50082-1
- FCC Part-15, Class A

ORDERING INFORMATION

CV200-TTX - MYZ

Y : power supply

- V External mains adapter
- C Internal 48 Vdc DC/DC converter

Z : Destination

- E Europe
- U USA

Options

- **DIN-WALL** : wall mounting kit
- **DIN-CPE** : DIN rail mounting kit
- **RACK-DUAL-CPE** : 19" mounting kit (2 products)
- **CV200-ALR** : external alarm relay

The information contained in this document are provided without warranty and do not constitute a contractual document. In order to improve its products, CXR reserves its right to modify without notice any part of this document.