

Highlights

- G.704 Unit: T1 - 1.544Mbps/E1 - 2.048Mbps
- Network interface: balanced 100/120 Ohm RJ-45 and unbalanced 75 Ohm BNC
- T1: G.704, DSX-1 and CSU Line Build Out, D4 and ESF framing
- E1: G.703, G.704 at 2.048Mbps, +/- 50 ppm
- G.704 and G.703 rate manager
- Ethernet Interface: 10/100 Base-T, automatic rate
- Flexible timeslot allocation
- Rate: Nx64 or Nx56Kbps
- T1 or E1 network mode selectable by the user
- Can be used as a short or long range modem (1 mile [1.6 km])
- Filtering Ethernet bridge
- 10,000 address memory
- 400 frame buffer
- Data compression algorithm up to 256Kbps
- Easy to manage: VT100 menus, Windows graphical software
- Local and remote Network management: Telnet, FTP, SNMP and TRAP

Applications

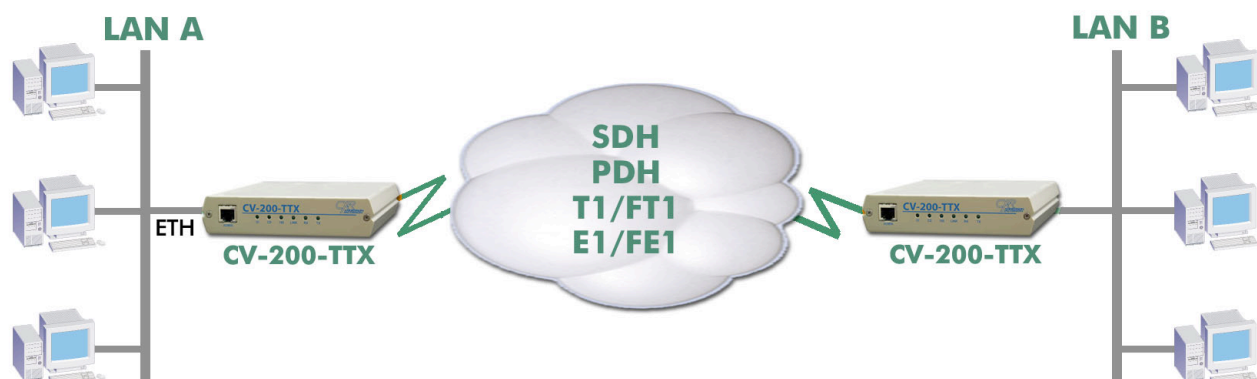
The CV-200-TTX is an efficient and cost effective Ethernet bridge to connect two enterprise Local Area Networks (LANs) over a T1 or E1 network such as a PDH loop, a microwave link, or other network with T1/E1 interface, or in a point-to-point scheme. The CV-200 provides all the features and rate conversion capabilities of a complete CSU/DSU, with a T1 and E1 network interface, and both Nx64 and Nx56K conversion. The Ethernet bridge provides many advantages such as high performance, protocol transparency, ease of installation and configuration and data compression.



The **CXR-Anderson Jacobson CV-200-TTX™** is a manageable 10/100 Base-T Ethernet bridge that connects to a G.704 network termination in T1 - 1.544Mbps or E1 - 2.048Mbps.

The CV-200-TTX is a must component of T1/E1 network to interconnect Ethernet LAN. The CV-200 fits in a compact metallic enclosure with a choice of 110 Vac or 230 Vac power supply, or 48 Vdc or 12-36 Vdc DC/DC converter to satisfy most industrial and Telco requirements. The CV-200 embeds a T1 and E1 network interface. It easily deploys in international applications and the user can set the bridge for T1 or E1 network access. The CV-200 includes a powerful Ethernet bridge. It will suit most network interconnection needs with its Ethernet frame filtering, compression algorithm, VLAN and other protocol transparency features.

The CV-200-TTX is very easy to operate with the provided Windows graphical software. The CV-200 can also be managed from the local area network with IP protocols such as Telnet, SNMP and FTP. The CV-200 installation is very flexible in that it can be on a desktop or mounted on a DIN rail with an optional kit. The two units may also be installed in a 19 inch rack. The MX-200-TTX is also part of the CV-200 product family. The MX-200 is a Drop and Insert multiplexer with an Ethernet interface and an RS-232 port to connect asynchronous equipment.



Anderson Jacobson CV-200-TTX

Specifications

T1 INTERFACE

- Line code: AMI, B8ZS
- Line Build Out: DSX-1 and CSU
- Framing: D4, ESF
- RJ-48 socket: Long Haul: -15 dBm
Short Haul: -36 dBm
- Timeslot rate: Nx64 or Nx56Kbps
- Phase jitter performance: G823
- Rate: 1.544Kbps +/- 50 ppm
- Transmit clock: Internal, network
- Impedance: 100 Ohms on a RJ-45 socket
- Insulation: 1500V as per K20 and K21 standards
- G.704: 1 to 24 IT

E1 INTERFACE

- Framed mode (G.704) or Transparent (G.703)
- G.704 framing: PCM31, PCM31C, PCM30, PCM30C
- Impedance: 120 Ohms, RJ-45 socket
- Impedance: 75 on BNC sockets for the network interface
- Phase jitter performance: G823
- Line code: HDB3
- Rate: 2.048Kbps +/- 50 ppm
- Long Haul/Short Haul: -16/-40 dBm
- Transmit clock: Internal, network
- Insulation: 1500V as per K20 and K21 standards

ETHERNET INTERFACE

- Rate: 10/100Mbps
- Interface: 10/100 Base-T, IEEE 802.3
- Socket: RJ-45
- Ethernet bridge with automatic MAC address learning: 10,000 MAC address memory
- Filtering of Ethernet frame can be enabled/disabled
- Padding bit suppression: Enable/disable
- Data compression algorithm for rates up to 256Kbps
- Statistics: Sent and received frame counters, filtering diagnostics
- 400 Ethernet frame buffer
- Auto link down if T1/E1 is not synchronized

TIMESLOT ALLOCATION

- Timeslot extraction from the network interface to the Ethernet port
- User defined allocation, no restriction
- Nx56Kbps or Nx64Kbps

CONFIGURATION PORT

- RS-232, V.24/V.28, RJ-45 socket, 8 bits, 19.2Kbps
- VT 100 menus, AT commands

LED INDICATORS

- Power/management in progress
- Test
- Link: LAN is connected
- LAN RX: Data received from the LAN
- LAN TX: Data sent to the LAN
- WAN CD: Signal received on the WAN T1/E1 port
- WAN SYNC: T1/E1 network is synchronized

MANAGEMENT

- Local management through the console port: AT commands, VT 100 menus
- Windows graphical software MX-CFG: Edit and save configuration on the PC, supervision, test control, firmware upgrade
- Diagnostics: Network test loop, PING

MANAGEMENT (Continued)

- TCP-IP management: Telnet, SNMP, FTP for configuration and firmware file transfer
- Remote control through TCP-IP protocols
- Statistics over 24 hours: Counters for Loss Of Synchronization, loss of carrier, Errored Seconds, Severely Errored Seconds, Unavailable Seconds

POWER SUPPLY

- External 110 VAC: CV-200-TTX-MVU (< 5 W)
- External 230 VAC: CV-200-TTX-MVE (< 5 W)
- Internal 48 VDC: CV-200-TTX-MC (< 5 W)

ENVIRONMENT

- Size: 5.77 in x 5.67 in x 1.21 in
- Weight: 1.1 lbs. (0.5 kg) - Mains power supply: .22 lbs. (0.1 kg)
- Operating temperature: 32° to 122° F (0 - 45 ° C)

COMPLIANCE/REGULATORY

This equipment has been designed to comply with the following standards:

- EN/UL-60950
- EN-50081-1
- EN-50082-1
- Part 15, Class B

Ordering Configurations

CV-200—TTX-MYZ

- M:** Metal Case
Y: Power Supply
V: External mains adapter 115/230 VAC (supplied)
C: Internal 48 VDC DC/DC converter
- Z:** Destination
U: USA/North America
E: Europe/Asia/South America

OPTIONS

- **CV-200-TTX-DIN:** Wall or DIN rail mounting kit
- **CV-200-TTX-RAK:** 19 inch mounting kit
- **CV-200-TTX-ALR:** External alarm relay