

G703 E2 / T2 Interface Converter – 6 / 8 MBPS

CV 8000**Characteristics
Benefits**

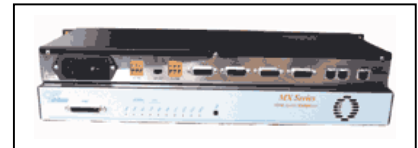
- G.703 - E2 8.448 MBPS converter
- G.703 - T2 6.312 MBPS converter
- Network interface : BNC sockets, 75 Ohms impedance
- E2 : G703 coding at 8,448 MBPS +/- 30 ppm
- T2 : G703 coding at 6,312 MBPS +/- 30 ppm
- Data Terminal Interface : multiple protocols as RS530, V35, X21
- Ethernet Interface 10 / 100 BaseT, automatic MDI / MDX detection
- Up-to-date technologies for clock and jitter control
- Line rate: 8.448 MBPS or 6,312 MBS +/- 30 ppm
- Ethernet filtering bridge
- 10,000 Ethernet address memory
- 400 Ethernet frame buffer
- Easy operation : VT100 menus, graphical software for MS-Windows systems
- Network management : tcp-ip, local and remote
- SNMP management: operation control and alarm reporting - TRAP
- Local and remote test loops
- Diagnostics and statistics
- Log file of critical events
- Dry alarm relay on screw bloc
- 19 inches format, ETSI compatible
- 110-230Vac mains or 48Vdc power supply

ETHERNET BRIDGE & E2/T2 CONVERTISSEUR

CV-8000 is a G.703 interface converter that connects a data terminal interface to an E2 – 8.448 MBPS or T2 – 6.312 MBPS network interface. The data terminal interface is either a multiple protocol data port that is user configurable as RS530, V35 or X21, or a 10/100 Base TX Ethernet interface that provides bridge capabilities.

CV-8000 is especially well suited for interconnecting networks through microwave link at 6 or 8 MBPS. It can connect an X21/V35 router to the E2/T2 network, or even provide a plug and play connection thanks to its embedded Ethernet bridge.

CV-8000 is a 19 inch / 1U high enclosure that can fit in a standard 19" bay. It can be powered from the 110-230 Vac mains or from any 48 or 9-39 Vdc supply.



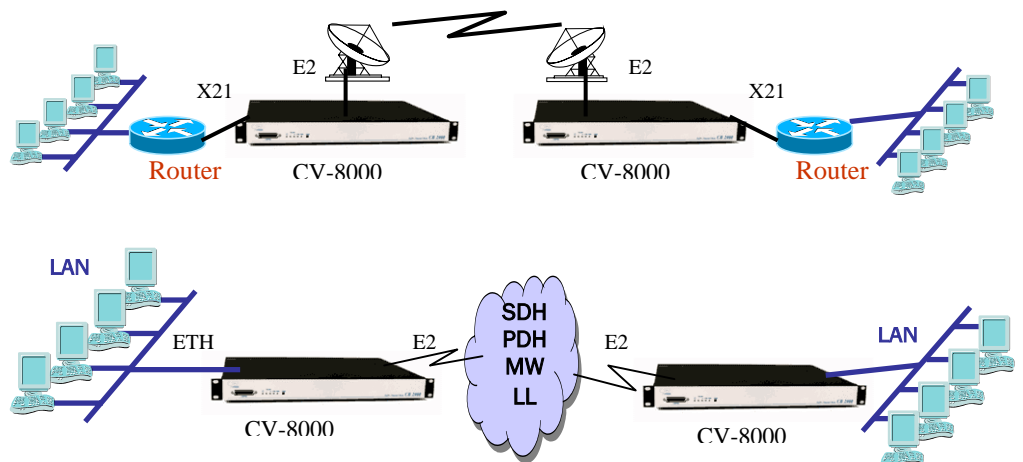
CV-8000 is so easy to operate thanks to its intuitive menus and its graphical management software provided with the unit.

CV-8000 can be managed from the LAN through Telnet protocol, or through an optional snmp and graphical MIB. It provides full operating information and a log file of the critical events to allow a full monitoring of the transmission.

CV-8000 is part of a complete PDH / SDH range of CXR products, with rates of 64 KBPS to 155 MPBS.

APPLICATIONS

Interconnecting enterprise LAN networks through an E2 -8.448 MBPS or T2-6.312 MBPS link

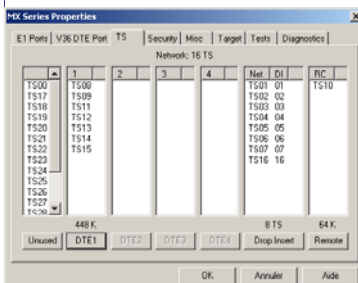


CV-8000 provides a plug and play LAN interconnection thanks to its Ethernet bridge, through a microwave link at a rate of 6.312 (T2) or 8.448 MBPS (E2).

Alternatively, its RS530 interface can connect to the data port of a router

The RS-530 interface is user selectable in RS530, V35 or X21 to suit any application requirement. The embedded Ethernet bridge provides several key advantages : ease of operation, cost effective, protocol transparency, performance.

E2 / T2 Interface Converter
Terminal Interface X21, RS530, V35
Ethernet Bridge100 Base TX



MXCFG : graphical software for managing the CV/MX range of CXR products



Rue de l'Ornette
 28410 Abondant
 France
 Tél : +33 (0) 237 628 790
 Fax : (0) 237 628 801
 Email : trans@cxr.fr

TECHNICAL SPECIFICATIONS

Network Interface

- G703, clear channel
- E2 rate : 8.448 MBPS, +/- 30 ppm
- T2 rate : 6.312 MBPS, +/- 30 ppm
- BNC Socket
- Impedance : 75 Ohms
- Line coding: HDB3 - AMI
- Line loss : -6 dB
- Clocking : internal reference, network, terminal
- 1500V insulation as per UIT-T K20 and K21

Terminal Interface

- DB25-F socket, RS-530 assignment
- Modes : X21, V35, RS530, V36
- E2 rate : 8.448 MBPS +/- 30 ppm
- T2 rate : 6.312 MBPS +/- 30 ppm

Ethernet Interface

- Rate : 10 / 100 MBPS
- Interface : 10/100 BaseTX, IEEE 802.3
- Socket : RJ45
- Automatic MDI / MDX
- Ethernet bridgewith automatic learning of up to 10,000 MAC addresses
- 400 Ethernet frame buffer
- Filtering or transparent bridge
- Statistics : counters for sent / received frames, and filtering diagnostics

Light Indicators

- Power / administration
- WAN CD : network signal detection
- WAN SYNC : network synchronization
- WAN ERR : network alarm indication
- Test : loop test indicator
- Link : Ethernet connection
- LAN RX : data received from the LAN
- LAN TX : data sent to the LAN
- DTE RX : data received by the data terminal
- DTE TX : data sent by the data terminal
- DTE ERR : terminal alarm indicator
- DTE ACT : active terminal detection

Configuration Port

- V24/V28—8 bits, 19.2 Kbps
- VT 100 compatible
- AT commands or intuitive menus
- RJ45 socket and DB9 cable

Management

- Local Admin port : AT commands or intuitive VT100 menus
- Graphical software running MS-Windows : configuration editing and saving, monitoring, test, firmware upgrade
- Diagnostics : local and remote loop tests, PING
- Tcp-ip management ; Telnet, FTP for configuration and firmware upgrade
- Remote unit control through tcp-ip Telnet protocol
- SNMP and graphical MIB as an option
- NTP client for event stamping
- 24 hour statistics : counters for LOS, AIS
- Log of the last 40 events : LOS, AIS, terminal status, configuration change, unit start-up
- Alarm relay : 3 terminal screw bloc, critical events defined by the user
- Flash Eprom memory for firmware upgrade

Power Supply

- Mains : 110-230 Vac, 50-60 Hz, IEC socket
- 48 Vdc : 36-72 Vac, 9-36 Vdc as an option, terminal, screw bloc

General

- Dimensions : 146.5 x 144 x 30.7mm
- Weight : 3.4 kg
- Operating temperature: 0 - 45 °C
- Design with respect to : EN 60950, EN 50081-1, EN 50082-1, FCC Part-15 Class B

ORDERING INFORMATION

CV-8000 - MZ

E Z : Country and Network Interface
 U Europe – E2 network interface
 USA – T2 network interface

Options
 CV8-SNMP : SNMP and graphical MIB

The information contained in this document are provided without warranty and are not contractual
 In order to improve his products, CXR reserves his rights to modify his products without notice.