

E3 & T3 FIBER OPTIC EXTENDER

FO E3T3 - TTX

Benefits

- E3 or T3 extender on fiber optic
- Dual function : E3/T3 extender and Ethernet bridge on fiber optic at E3/T3 rate
- Combo product : E3 & T3
- Complete choice of fiber optic interfaces
- E3 : G703 34,368 Mbps +/- 20 ppm
- T3 : DS3 / DSX-3, 44.736 Mbps +/- 20 ppm
- Ethernet : 10 / 100 BaseTX, auto sense, auto MDIX
- Up-to-date technologies of clock and jitter control
- Standalone enclosure or rack mount card for 19" chassis
- Easy selection of the E3 or T3 mode by the user
- Phase jitter according to ETSI TBR-24, Bellcore GR499
- Ethernet filtering bridge : 2,000 MAC addresses memory, 284 Kb frame buffer
- 802.3x flow control
- Easy to operate : intuitive menus, Windows™ click & run software
- Local and remote TCP-IP management
- SNMP agent for configuration and alarm reporting
- Temporized alarm relay
- Embedded 2^E15 BER test
- Standalone enclosure with a choice of AC and DC supplies
- Rack mount card for AMS chassis

E3 & T3 FIBER OPTIC MODEM AND ETHERNET BRIDGE

The **FO-E3T3** is not only a fiber optic modem aimed at transporting an E3 or T3 interface, but it is also an Ethernet bridge over fibre optic at E3/T3 rate. The **FO-E3T3** behaves as an interface converter for carrying Ethernet / IP packets through an SDH network. The operating mode is easily user selectable.

Thanks to a complete choice of diode and laser optic interfaces, the **FO-E3T3** performs an E3 / T3 trunk extension over a 4 to 60 km distance.

The **FO-E3T3** transports the E3/T3 data flow with full transparency to data and synchronisation elements. The **FO-E3T3** embeds a phase lock system for clock control for restoring an E3/T3 signal with optimum jitter.

The **FO-E3T3** satisfies corporate requirements for interconnecting their facilities with high throughput, as well as micro-wave and Internet provider requirements.

The **FO-E3T3** fits in industrial and carrier applications thanks to its standalone and 19" rack mount versions with a choice of mains and DC power supplies.



The **FO-E3T3** records diagnostics and statistics information over periods for the last 24 hours of operation. An alarm relay can drive an external equipment in case of loss of signal for a defined period of time.

The **FO-E3T3** is very easy to operate especially from its graphical Windows™ based software.

The **FO-E3T3** can be controlled from its local console port, or from the Ethernet network with SNMP and Telnet protocols.

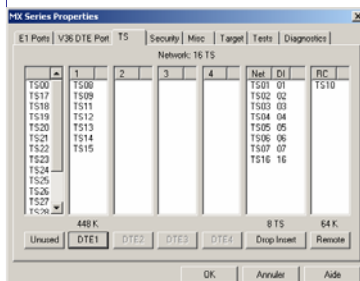
The **FO-E3T3** can work with a **CV-E3T3** interface converter which carries an Ethernet interface over an E3/T3 link.

APPLICATIONS



Ethernet interconnection through an E3 or T3 link

The **FO-E3T3** transports an E3/T3 trunk over long distances and ensures Ethernet traffic transport over an E3/T3 network. The link is transparent to the Ethernet and higher level protocols. Operating the system is very easy and efficient. The remote end may be made of a CV-E3T3 unit when only a short distance stands between the Ethernet LAN and the E3/T3 network access point.

E3 / T3 Fiber Optic Modem**10 / 100 Mbps Ethernet Bridge**

MXCFG : graphical software for controlling the CV / MX range of products



TECHNICAL SPECIFICATIONS

E3 Interface

- G703 clear channel
- Coding : HDB3
- Bit rate: 34.368 Mbps +/- 20 ppm
- Phase jitter: G.751, G.752, G.755, and attenuation ETSI TBR-24
- Sensitivity : 12 dB line loss
- Clock modes internal or remote receive
- Impedance : 75 Ohms on BNC sockets
- Insulation : 1500V

T3 Interface

- Coding : B3ZS
- Interface : DSX-3, GR253, ANSI T1.102
- Bit rate : 44.736 Mbps +/- 20 ppm
- Phase jitter : Bellcore GR499
- Sensitivity : 12 dB / 1,000 ft line loss
- Clock mode : internal or remote receive
- Impedance : 75 Ohms on BNC connectors
- Insulation : 1500V

Ethernet Interface

- Rate : 10 / 100 MBPS
- Interface : 10/100 BaseT, IEEE 802.3
- Automatic rate control : 10 / 100 Mbps
- Automatic sense : MDIX
- RJ45 socket with Speed and Link/Act indicators
- Ethernet bridge : 2,000 MAC address memory
- Mode store and Forward
- Encapsulation : HDLC
- Frame buffer : 400 KB

Fiber Optic

- Connector : SC - FC or ST as an option

Console Port

- RS232 / V24/V28 : 8 data bits, 19.2 Kbps
- VT 100 compatible, AT commands or intuitive menus
- RJ45 connector and DB9 adapter

Light Indicators

- Power / management
- Test : Loop / BER test
- ERR : error during a Loop / BER test
- E3/T3 : valid signal on the E3/T3 interface
- AIS : alarm detection at the network interface
- Sync : fiber optic synchronization
- On the Ethernet interface connector:
 - Speed : light of 100 Mbps speed
 - Link / Act : connection of the Ethernet LAN, and frame activity

Management

- Local RS232 console port : AT commands, intuitive VT100 menus
- MS Windows™ graphical software – MX-CFG : configuration editing and storing, operation control, test control, firmware update
- Diagnostics : network loop, PING, 2^E15 BER test
- TCP-IP management : Telnet client and server, SNMP, FTP for firmware update
- Remote system control through TCP-IP protocols
- Statistic over the last 24 hours, 1 hour and 15 minutes : E3/T3 and Ethernet interface status, error seconds on the Ethernet and E3/T3 interfaces, AIS second counter, Ethernet frame counters
- Alarm and critical event log
- Temporized alarm relay

Power Supply

- 110-230 Vac : FO-E3T3-xxl
- 48 Vdc (36 – 72 Vdc) : FO-E3T3-xxC

Miscellaneous

- Size : 260 x 170 x 35 mm (DxWxH)
- Weight : 0.8 kg
- Operating temperature: -10 to +50 °C
- Hygrometry : 10 to 90 %, non condensing
- CE: EN-60950, EN-55022, EN-55024

ORDERING INFORMATION

FO - E3T3 – TTX XX Y Z Fiber optic Modem with E3 / T3 and Ethernet interfaces

XX = fiber optic interface

M3 LED multi-mode 1310 nm - 4 km
 SL Laser mono-mode 1310 nm - 40 km
 Z3 Laser mono-mode 1310 nm – 60 km

Y = fiber optic connector

C SC connector
 T ST connector
 F FC/PC connector

Z = power supply

I 110 – 230 Vac mains
 C 36 – 72 Vdc DC supply

R Rack mount card for AMS chassis

Information contained in this document are not contractual.
 Concerned in constantly improving its products, CXR AJ reserves its right to modify specifications without notice.



Rue de l'Ornette
 28410 Abondant
 France

Tel : +33 (0) 237 628 790
 Fax : +33 (0) 237 628 801

Email : trans@cxr.fr