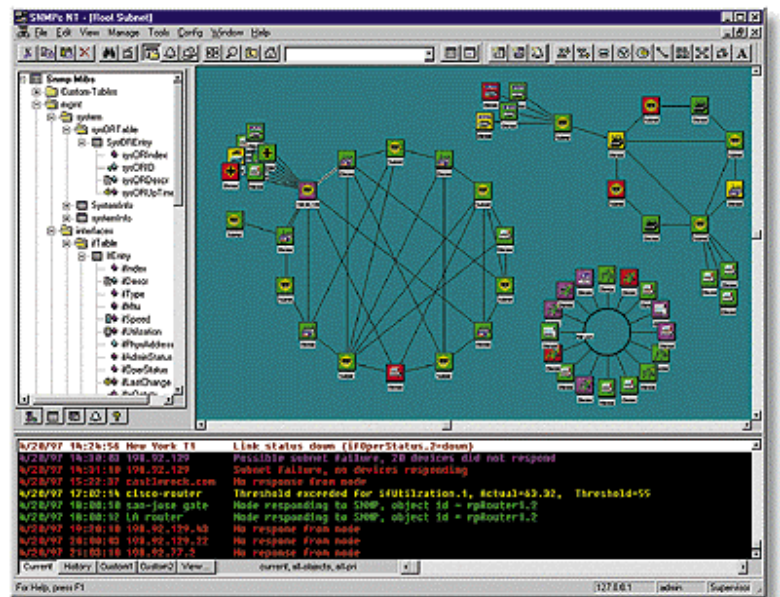


SNMPC 5.1 Network Manager

SNMPC 5.1 Network Manager is a scalable, distributed management suite for managing small to large sized networks. SNMPC Enterprise Edition employs multiple components running on different computers, and uses distributed database technology to provide a high performance platform regardless of the size or configuration of your network. SNMPC Workgroup Edition is an affordable version of SNMPC for a single user and small to medium sized network

Key Product Features

- Supports Secure SNMP Version 3
- Runs under Windows XP/2000/NT/ME/98
- Full RMON-1 Application
- Automatic Baseline Alarms
- MIB Expressions (e.g., Utilization)
- Email/Pager Event Notification
- Advanced Event Actions
- Network Discovery
- Real Time Tabular/Graphical Displays
- Device Specific Applications
- Programming Interfaces
- Optional Multiple Console Logins
- Optional Distributed Polling Agents
- Optional WEB/Printed Reports
- Optional JAVA Console



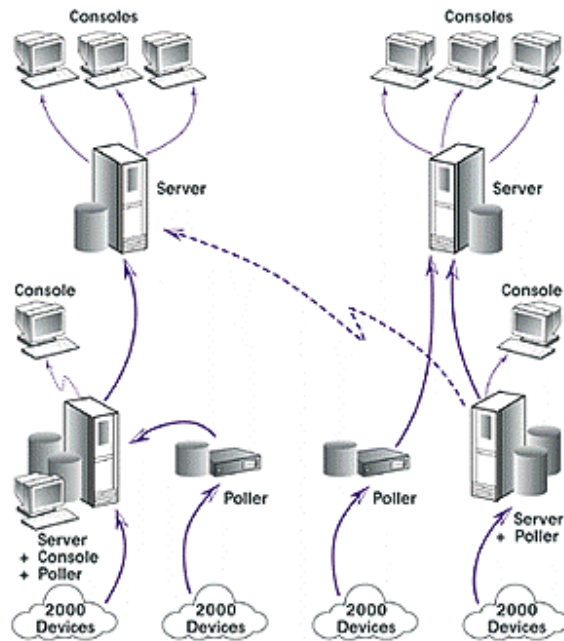
Distributed Architecture

Domain Management

SNMPC Enterprise Edition supports management of multiple distributed domains. Each server can import the map of one or more remote servers. Alarms are automatically propagated from "slave" servers to "master" servers. A full peer-to-peer architecture is supported where each server can operate in both slave and master roles simultaneously. Domain management can be used to implement backup management and "manager of managers" schemes.

Multiple Login Consoles

SNMPC Enterprise Edition provides both local and remote access using the Remote Console component. You can run the remote console application from any Windows workstation using a local or remote TCP/IP connection. All SNMPC Enterprise functions are available from remote consoles. Each console can have complete read-write access, independent of other console sessions. SNMPC Enterprise Edition includes one remote console license. The Remote Access Extension allows unlimited Remote Console users.



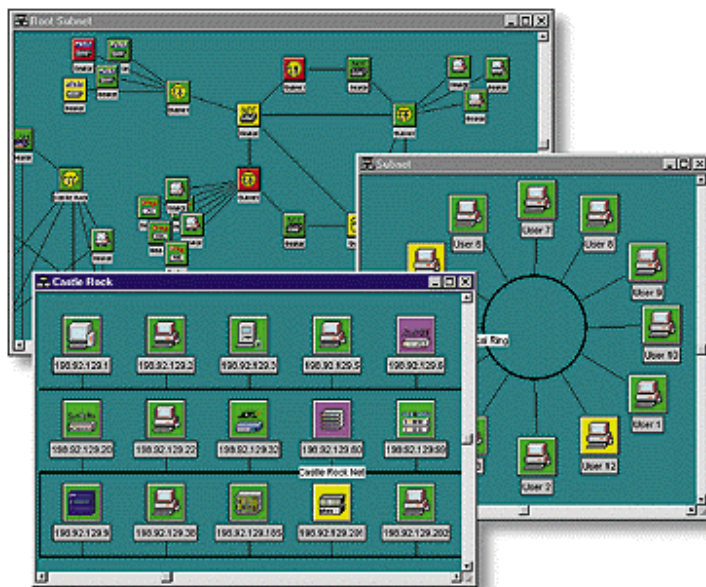
Distributed Polling

Polling Agents perform discovery of locally attached network devices. Each Polling Agent uses discovery filters, based on network addresses to limit the scope of the discovered topology. The discovery algorithm determines the device type, its network attachments, and supported protocols, including IP, SNMP, Telnet, and HTTP (WEB).

Polling Agents monitor the status and alarm thresholds for discovered devices using ICMP and SNMP requests. Polling Agents also save long term MIB statistics in a local database. Status changes and alarms are forwarded to SNMPc Enterprise Servers. SNMPc Enterprise includes one local polling agent. SNMPc Enterprise includes one Remote Poller license. The Remote Access Extension allows unlimited Remote Pollers..

Advanced Network Mapping

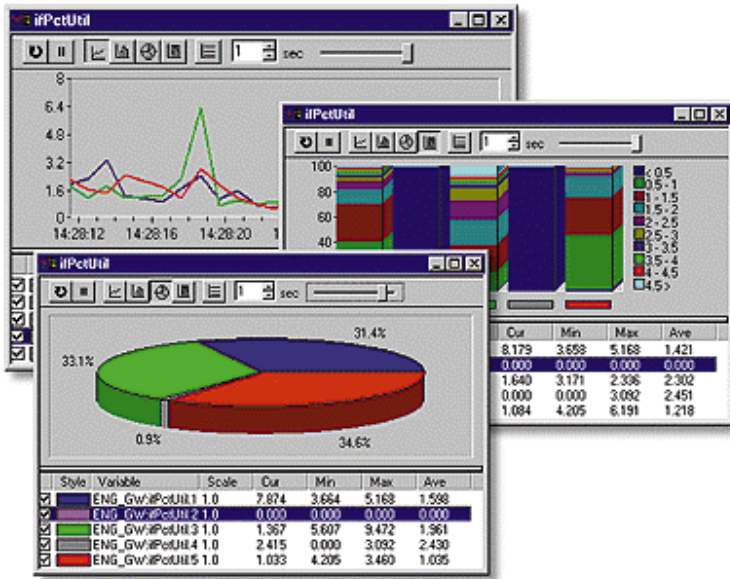
SNMPc supports a multi-level hierarchical map. Each hierarchy can represent cities, buildings, or subnetworks. Imported bitmaps of geographic maps or floor plans, along with manual or automatic network placement, lets you create a layout that closely matches the actual network.



SNMPc can automatically lay out each map network as a tree, ring, or snaked bus topology. Each map object uses a device specific or user selected icon, and the object color indicates the device status. You can start any device specific application by double clicking map icons.

The Map Navigation Tool Window displays the map as a tree for direct selection of objects. The Navigation tree also displays the worst status of each subnet to quickly locate failing devices.

The map window Full Zoom feature automatically moves and zooms the view so that all devices are always visible in the window. The Pan/Zoom feature lets you select a region to zoom into from the complete set of devices in a view.



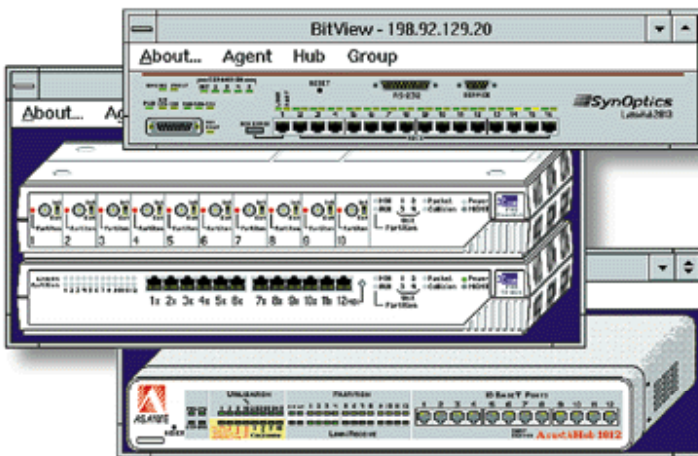
Device SNMP Views

Real-time MIB Displays

SNMPC supports real-time displays of MIB variable data in tabular or graphical format. Table or graph displays can include multiple devices and variables from different standard and private MIBs, including derived expressions such as Utilization, Volume, and Percent Errors. You can select any variable cells, table rows or columns, for graphical display.

Multi-Vendor Graphical Device Views

The HubView and BitView scripting applications display a graphical image for multi-slot routers, bridges, and hubs. Device specific custom menus and mouse commands perform SNMPc commands on the selected slot or port, or other graphical element.



SNMPC includes device scripts for all devices that conform to standard MIBs and for dozens of private MIB devices, including Cisco, Bay, and 3com devices. You can easily develop HubView or BitView scripts to graphically manage any SNMP device.

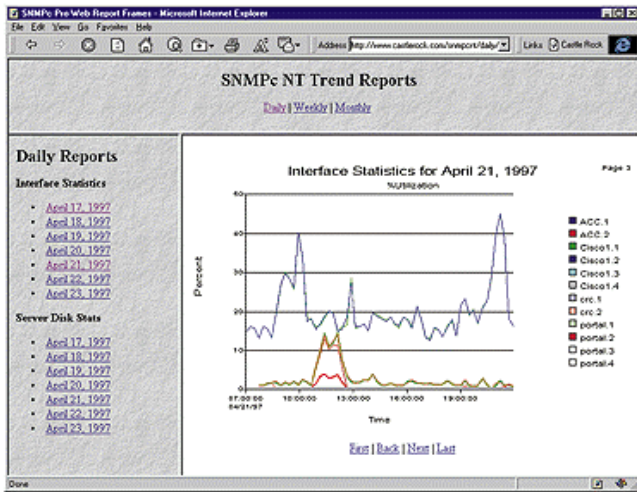
RMON User Interface

SNMPC includes support for any RMON-I probe. You can configure and view data from any of the RMON groups. The Matrix

program shows Host conversations in a matrix graph. Packet capture filters use protocol or application type and source or destination addresses. Captured packets can be saved in industry standard formats.

MIB Browser

SNMPC includes a general purpose MIB browser for displaying and setting individual MIB variables. The MIB Browser can also read all variables supported by a device and export the variable names and values to a file.



Trend Reporting

Scheduled Printed and WEB Reports

SNMPc Enterprise automatically generates scheduled daily, weekly, and monthly statistic reports. Report formats include graph, bar chart, distribution, and summary, and can be exported to a variety of destinations, including printers, files, or a WEB server.

SNMPc Enterprise report setup is very simple. After selecting a group of nodes and a MIB profile, then the reporting style, destination, and schedule, SNMPc Enterprise automatically programs all remote polling agents. You can use the included TrendView application or a WEB browser to view reports from any workstation.

ODBC Export

SNMPc Enterprise can automatically export all saved long-term statistics to industry standard ODBC databases. Use familiar tools such as Seagate Crystal Reports or Microsoft Access to generate customized trend reports.

Trend Analysis

Saving long term statistics is of little use if the result is mountains of data to peruse. SNMPc Enterprise helps you find interesting traffic patterns before they become problems.

SNMPc Enterprise can search for the top set of variables polled by a variety of criteria, including greatest rate of increase, greatest value, and greatest deviation from baseline. Using searches in scheduled reports shows the problem areas in your network, before polling generates threshold alarms.

Node	ACC_GW	ACC_GW	ACC_GW	ACC_GW
Index	1	2	3	4
Descr	Ethernet0	Ethernet1	Ethernet2	Ethernet3
Type	ethernet-csmacd	ethernet-csmacd	ethernet-csmacd	ethernet-csmacd
Mtu	1500	1500	1500	1500

Add Custom Expression Dialog:
 Expression Name: #Utilization
 Expression: $800 * [(\#InOctets) + (\#OutOctets)] / [(\#Time) * (\#Speed)]$

Add Custom Table Dialog:
 Table Name: #Custom
 Variables in Table: #InDiscards, #InErrors, #InUnknownProts, #OutOctets, #OutDiscards, #OutErrors, #OutLen, #Specific, #Utilization

Customization

MIB Expressions

SNMPc supports MIB expressions to show derived information such as line Utilization. You can use any of the predefined MIB Expressions, or create your own, to automatically view interesting information in a format you can understand. You can add MIB expressions MIB source files, or create them dynamically with the MIB Expression Calculator.

MIB Compiler

The built-in MIB compiler accepts any MIB in ASN.1 format. Many standard and Enterprise Specific MIBs are preinstalled and ready to use. Once compiled, you can use MIB definitions with any SNMPc NT MIB functions, including the table or graph displays and long term statistics polling.



Custom Tables

You can dynamically create custom tables using the MIB navigation tool window. Custom tables can be subsets of existing MIB tables, or can include variables from tables in different MIBs. You can use MIB Expressions to include derived data types such as Utilization, Volume, and Percent Errors.

Custom Menus

User defined custom menus directly perform SNMPc commands without having to select MIB objects. Custom menus can display a MIB table; edit, graph or chart any set of MIB variables; set an SNMP MIB variable; or run an application program. SNMPc automatically enables or disables Custom Menus depending on the protocol attributes supported by the selected objects.

SNMPc 5.1 Product Options

SNMPc 5.1 includes the three product options described below. All components run under Windows 2000/NT/XP/98/ME

SNMPc Enterprise Edition is the base system for a scalable multi-user environment. Enterprise Edition includes the SNMPc Server license, one Remote Console license, and one Remote Poller license. This system can be used simultaneously by two users, one at the server system and another at a Remote Console system. The Remote Poller can be used to extend the polling capabilities to a remote polling site.

SNMPc Remote Access Extension is a license only option for the Enterprise Edition. This option allows an unlimited number of Remote Console users and Remote Polling agents. It also provides JAVA Console support.

SNMPc Workgroup Edition is a single user version for managing small to medium sized networks. All components run on a single system and support one user. The map database size is limited to 1000 objects. The Workgroup Edition does not include advanced reporting functions.

The following table shows the differences between these options:

Feature	Enterprise	Remote Extension	WorkGroup
Secure SNMP Version 3	Yes		Yes
Win32 Application	Yes		Yes
Device Limit	25000		1000
Distributed Scalable Architecture	Yes		No
Server/Poller Operating Systems	Win XP/2000/NT *		Win XP/2000/NT/ME/98
Console Operating Systems	Win XP/2000/NT/ME/98		
Remote Poller Included	Yes (1)	Unlimited	
Remote Console Included	Yes (1)	Unlimited	
JAVA Console Included	No	Yes	
Scheduled WEB Trend Reports	Yes		
Scheduled Printed Trend Reports	Yes		
Automatic ODBC Export	Yes		



* The Enterprise edition will run under Windows ME/98, but we recommend Windows XP/NT/2000.

SNMPC 5.1 System Requirements

Parameter	Enterprise	WorkGroup
CPU	Pentium II 266 MHz	Pentium II 266 MHz
Memory	128 MB	64 MB
Disk	500 MB	100 MB
Server/Poller Operating Systems	Win XP/2000/NT *	Win XP/2000/NT/ME/98
Console Operating Systems	Win XP/2000/NT/ME/98	

* The Enterprise edition will run under Windows ME/98, but we recommend Windows XP/NT/2000.